

# BELLINI RELOADED

Reperti d'archeologia futuribile

Giovanni Ferrauto, versione 2023

## INTRODUZIONE

Adagio ♩=58

**A**

30 *mp*

34 *ff* 5

42 **B** 2 *sordina* *mp* *mf*

47 *sf sf sf sf*

50 2

55 **C** **Allegro 11** *ff*

70 **D** **Vivo ♩=108 circa** 3 4 6

86 15 *sordina* *p*

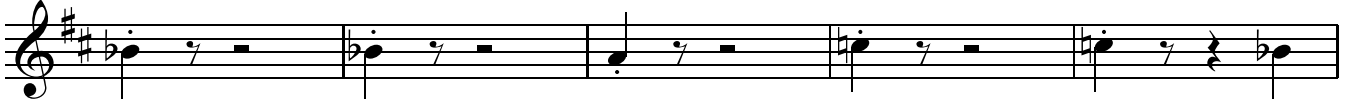
103 2

108



114

leva sordina



119

**E**

*ff*



125

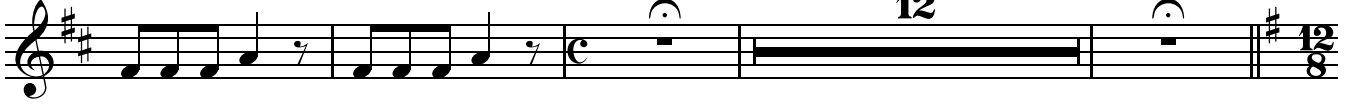


CADENZA

Moderato ♩=62

**12**

131



147

**F**

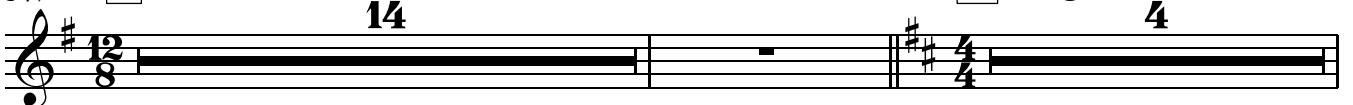
Andante sostenuto

**14**

**G**

Adagio

**4**



KLEINER KONTRAPUNKT

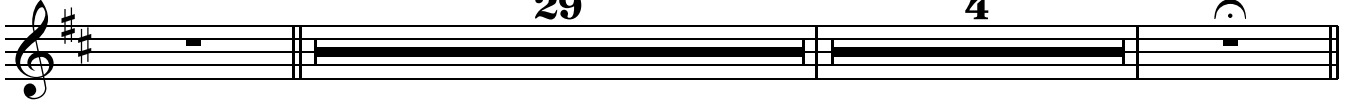
166

Andante ♩=84

**29**

poco ritenuto

**4**



MARCIA

Andante pesante

201

**H**

**4**

in evidenza



209

*f*



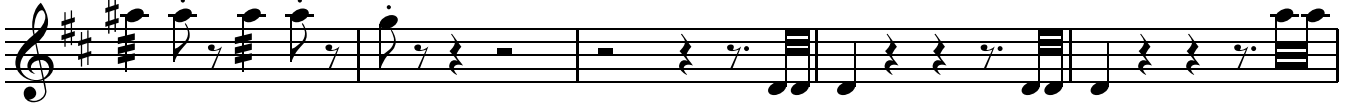
214

*ff*

*ff*



218



223 *ff*

228

232 *ff* *ff*

236 **I**

240 **J** Recitativo **K**

14 3 21

INTERLUDIO

279 **L** Adagio ♩=58 circa

12 18

sordina

*pp*

311

12

sordina

leva sordina

*pp*

327 **M** FINALE

Presto ♩=132

2

*sf sf sf*

337

*sf sf sf sf*

2

346

*sff sff sff sff sff*

351

**N** *p sordina*

366

*p*

373

*p*

385

**O** *sff sff sff*

395

*sff sff sff sff*

404

*sff sff sff sff*

409

414

**P** *Vivo* ♩ = 86

422

431

3

Musical notation for measure 431 in G major, 2/4 time. The staff contains a sequence of eighth and sixteenth notes, followed by a triplet of eighth notes, a quarter rest, and a quarter note with a grace note. The measure ends with a quarter note and a quarter note with a grace note, both marked with accents.

442

Musical notation for measure 442 in G major, 2/4 time. The staff contains a sequence of eighth and sixteenth notes, followed by a quarter note with a grace note, and a quarter note with a grace note, both marked with accents.

450

Musical notation for measure 450 in G major, 2/4 time. The staff contains a sequence of eighth and sixteenth notes, followed by a quarter note with a grace note, and a quarter note with a grace note, both marked with accents.

459

3

Musical notation for measure 459 in G major, 2/4 time. The staff contains a sequence of eighth and sixteenth notes, followed by a triplet of eighth notes, a quarter rest, and a quarter note with a grace note. The measure ends with a quarter note and a quarter note with a grace note, both marked with accents.

470

Musical notation for measure 470 in G major, 2/4 time. The staff contains a sequence of eighth and sixteenth notes, followed by a quarter note with a grace note, and a quarter note with a grace note, both marked with accents.

478

Musical notation for measure 478 in G major, 2/4 time. The staff contains a sequence of eighth and sixteenth notes, followed by a quarter note with a grace note, and a quarter note with a grace note, both marked with accents.

487

Musical notation for measure 487 in G major, 2/4 time. The staff contains a sequence of eighth and sixteenth notes, followed by a quarter note with a grace note, and a quarter note with a grace note, both marked with accents.